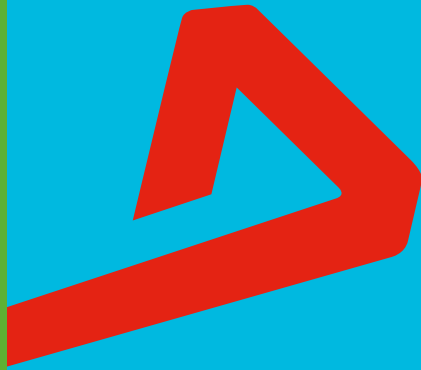


COLLECTION

2024



AIMONT
STYLE & STORY

EN EDITION



AIMONT,

First and foremost, Aimont is a family story. This story starts in Italy, in the region of Piedmont, in Soriso by Lake Orta to be precise.

A small company was founded here in 1950 that manufactured shoes for major sports brands. It was called ALMAR – AL for Alfonso and MAR for Maria – the two founders. Maria UZZENI handled manufacturing while Alfonso, her husband, sold the products.

Alfonso and Maria had a son called Pier Franco Uzzeni. Little Franco spent all his childhood surrounded by the clicking of “La Blake” as he used to call it, a sewing machine specialised in making shoes. La Black woke him up every morning telling him it was time to get ready for school, but little Franco stayed in bed a few minutes longer to count the time with his fingers that it took La Black to sew a shoe. As the years went by to the sound of La Black, he learned how many shoes could be made a minute and to tell if productivity was up to scratch. One thing was certain: he would continue the work of his parents and grandparents!



In 1987, Franco decided to breathe a new lease of life into ALMAR:

he decided to give the shoes he was making another dimension by focusing on risk prevention. In 1988, he created his own brand of safety shoes which he called AIMONT, which means “to the mountains”, a nod to ALMAR which means “to the sea”, symbolising the complementary nature between the 2 types of shoes he made.

«
**A family
business**
»

AIMONT



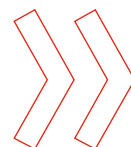
Franco “**thought big**”: making and selling shoes was in his DNA. From his grandfather on his mother’s side, he had inherited his expertise in production and materials. While from his grandfather on his father’s side who spent part of his life in France, he had kept his innate sense of marketing.

Franco’s bet paid off: the demand was there, as more and more workers were wearing safety shoes on building sites! To handle the increase in volume, he built his own factory in Bizerte, in Tunisia, where he used to spend his holidays as a child.



Pensa in grande

BIOGRAPHICAL
FILM



When Papi Sulà, as he still affectionately calls him today, moved to Pontarlier, a very rainy town, people wanted waterproof shoes whatever the price. To show them that the shoes he made could withstand moisture, he put a basin full of water with one of his shoes inside in his shop window. He then used to slide a match along it and asked his customers to take the match and light it. Each time the customers

did the test, the match would light, which proved that the shoe could withstand moisture!

STORY

FRANCO



We are **proudly** and
enthusiastically getting back
onto the path where we left it



While staying true to our hallmark values of many years, we are creating a new future for a brand that has shaped the history of safety shoes.

Our mission is to make Aimont a stylish brand deeply rooted in its history, while ensuring that anyone who wears it stays safe and looks original.

Franco Uzzeni

FRANCO UZZENI
CEO

AS A SPORTS AND MOTOR RACING FAN,

Franco wanted his shoes to protect and benefit from the best technologies for workers without, however, sacrificing the design that is an integral part of the DNA of an Italian brand. So he created the first “**safety trainer**” and found the perfect balance between looking good and safety!

By “thinking BIG”, Franco Uzzeni managed to make Aimont a must-have safety shoe brand deeply rooted in its history with style and originality!

Franco Uzzeni Subaru, Monza Rally Show, 1998



UZZENI

1.		9.	
—		—	
VIGOREX	12	DOMINUS	40
2.		10.	
—		—	
FLIGHT	16	SUPREME	44
3.		11.	
—		—	
RETURN	18	GRIPPER WHITE	48
4.		12.	
—		—	
FACTORY	22	DYNAMIC	50
5.		13.	
—		—	
DIAMONT	26	ESSENTIAL	54
6.			
—			
24 BIT	30		
7.			
—			
TRAIL	34		
8.			
—			
SPECIALS	38		



CONTENITI

OUR TECHNOLOGIES

UPPER

DURABREATH

Lightweight high tenacity fabric, abrasion and stress resistant, ensures maximum breathability even in extreme situations.

MESH ULTRA

Fabric with a honeycomb structure superimposed designed to give maximum breathability. Combined with Memory footbed it enables an enhanced air circulation inside the footwear keeping the foot fresh and dry.

Air- Texplus

New fabric made of lightweight and extremely breathable synthetic fiber that helps keeping a balanced microclimate also in warm conditions granting at the same time an excellent abrasion resistance.

Fresh

Multilayer fabric highly breathable and resistant to abrasion and tears.

STARK®

Extremely abrasion-resistant material, used to prevent premature shoe wear in areas most exposed to friction

WAT-OUT

Breathable and non-allergenic microfiber, finished with a gel coating enabling a specific stain and wash resistance.



PUTEK® PLUS TECHNOLOGY uses new threads that are highly resistant to abrasion, directly woven into the fabric, for greater durability and increased performance. These highly resistant and water-repellent fabrics help create ultra-lightweight and extra-breathable S3 products.

LINING

OVERDRY

Lining featuring a new technical fiber abrasion resistant, highly breathable, smooth and soft to hand touch, granting a balanced micro climate inside the footwear also in extreme conditions.

3DLining

3D multilayer lining with honey comb structure acting as air flow channel all around the foot enabling high breathability and allowing for the transportation of the humidity outside the footwear.

Airnet®

Airnet is a fabric lining of air-tunnel construction to ensure high level of breathability. Resistant to abrasion, traction, laceration and washing.

3M Thinsulate™ INSULATION

Thermo insulating fiber giving the perfect thermal balance. Fresh in summer and warm in winter.

TOECAP

ALU^{LITE}

Aluminium toecap, lightweight, amagnetic, 200J resistant. It's 50% lighter compared to the classic steel toecap, whilst giving the same level of protection.

Light PLUS

Polymer based toecap, amagnetic, extremely lightweight, thermal insulating, 200J resistant.

CLASSIC STEEL

Classic steel toecap, 200J resistant.

FOOTBED

SOFT+GEL

Anatomical, anti-static with shock-absorbers on the heels, it wicks away perspiration thanks to the ventilation holes.

SOFT

The insole is made from BASF Elastopan memory foam which moulds to the shape of the foot thanks to its heat-sensitive viscoelastic properties, improving weight distribution and cushioning pressure points that could cause discomfort. Its ergonomic shape also helps improve support for the foot arch and shock absorption.

Maxi SOFT Duo

Sole composed of a BASF® PU Dynamic soft cushioning layer with thermosensitive shape memory and a BASF® Elastopan maxi size insert, improves weight distribution by reducing pressure points and helps absorb and relieve body stress during prolonged standing and walking. Anatomically designed, perforated and equipped with Link ESDTM, an innovative, seamless, multi-contact static dissipative system.

PLUS VENTO

Anatomic and antistatic footbed giving a stable support. Antimicrobial and anti-fungal.

MIDSOLES

FLEX^{system}_{ZERO}

Multi-layer composite insole, flexible, lightweight, non-magnetic, athermic, anti-corrosion and anti-allergic. It protects 100% of the foot's support surface; tested to the new EN ISO22568-4:2021 standard.

CLASSIC PLATE

Steel perforation midsole resistant to 1100 Newton.

SOLES

VIGOREX

A technological innovation from the running world now available for safety shoes. And because we are better when we feel good, trust VIGOREX to exceed your limits.

RETURN

A line of work shoes designed with High Rebound technology, which guarantees over 40% energy return during the support phase and foot thrust.

98GRIP

A special polyurethane compound and the cross-channel structure of the outsole guarantee excellent grip on all types of surface, with outstanding results in slip-resistance tests.

TRAIL

All-terrain Trail sole in dual-density polyurethane, featuring a deep tread pattern for maximum grip even in the most difficult situations.

SPECIALS

Vibram® Specials sole, developed and tested by Aimont and Vibram® and made from high-performance rubber to get the best grip coefficient, optimum resistance to wear and tear and a modern design. Designed to tackle the harshest environments, often in extreme weather conditions to always guarantee the best slip resistance. The Vibram® Specials sole withstands hot contact up to 300°C.

DIAMONT

A range of attractive, effective products, adapted thanks to a combination of technologies such as polymer tips, M.G.T Plus insoles and BASF polyurethanes.

SUPREME

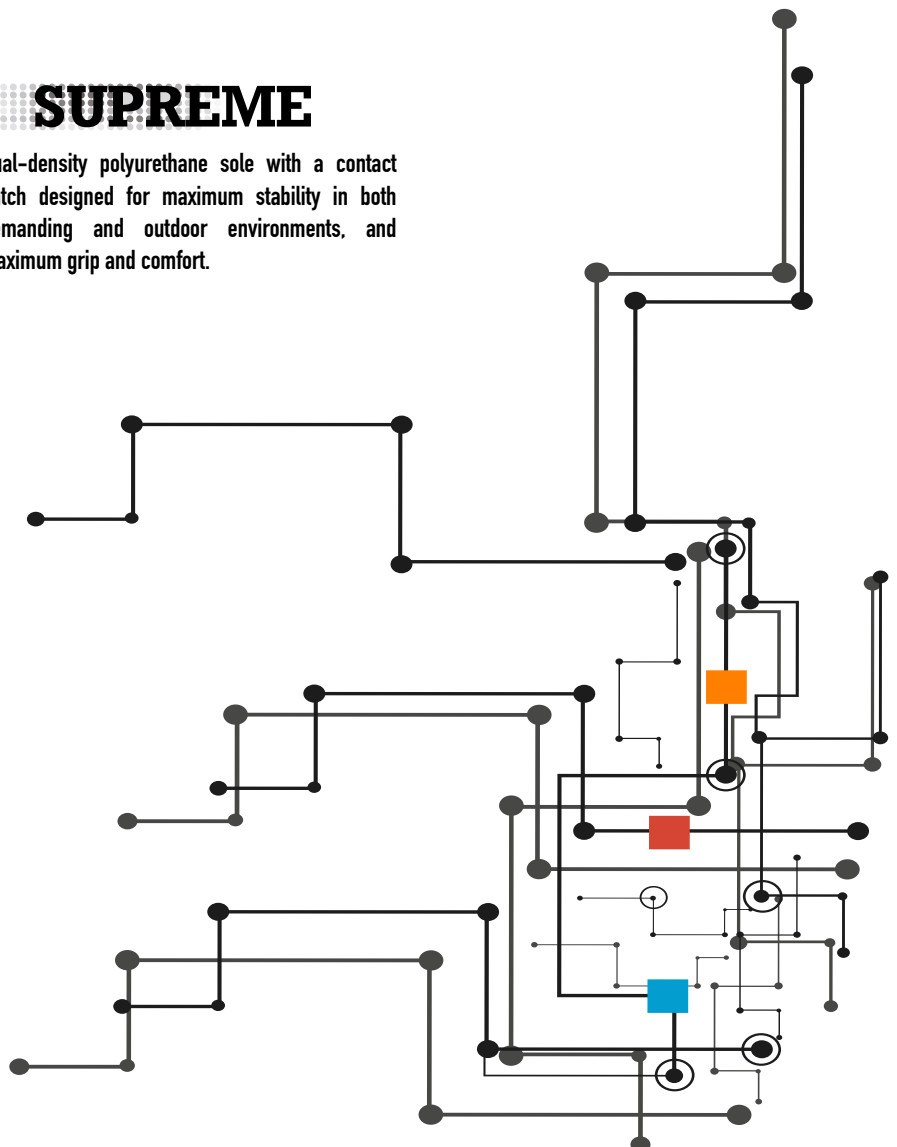
Dual-density polyurethane sole with a contact patch designed for maximum stability in both demanding and outdoor environments, and maximum grip and comfort.



Gripper White outsole in dual-density polyurethane, highly slip-resistant, oil-, hydrocarbon- and antistatic-resistant, with cross-channels for fluid drainage.

ESSENTIAL

Classic sole in dual-density polyurethane, ergonomically designed for greater resistance to slipping and abrasion.



TECHNOLOGY

Aimont strives to improve the well-being of workers with new technologies and solutions, dictated by more and more demanding restrictions. Aimont and BASF have combined their knowledge to offer you a new sole, the result of the latest collaboration of research and development, using a new high-performance material: BASF's expanded thermoplastic polyurethane:

E-TPU: Expanded Thermoplastic PolyUréthane

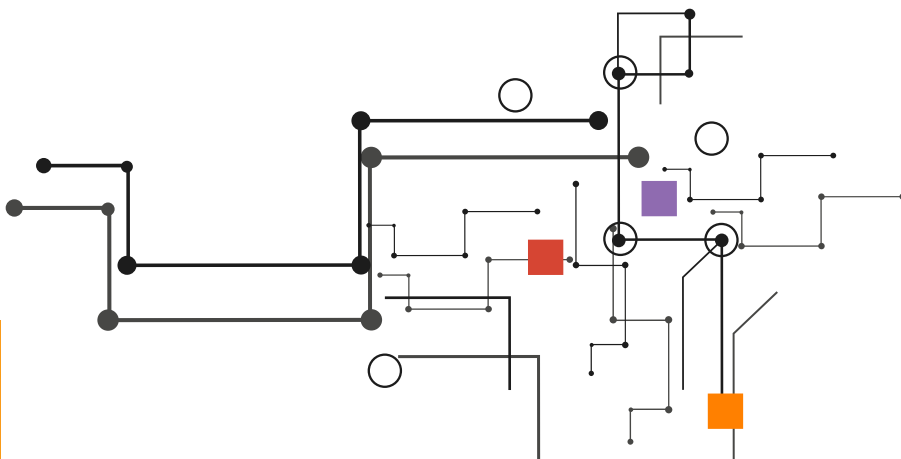
Which is marketed under the name **Infinergy®**.

Elastic like rubber but lighter, this innovative expanded TPU (E -TPU) combines, thanks to its closed cell technology, TPU properties with the benefits of foam:

- Low density (about 0,25) • High elasticity • Lightness and softness • High resistance to abrasion • High resistance to traction • Good chemical resistance • Very good long-term durability in a wide range of operating temperatures • An exceptional resilience (that has an extraordinary ability to return energy).

One of the most important characteristics of **Infinergy®** is the excellent elastic memory, thanks to its closed cells structure and to the original molecular architecture of the polymer.

The "rebound test" for elastic resistance, a test method determined by DIN 53512, proved that the **E-TPU** rebound coefficient is more than **55%**, much higher than all other polymers available on the market.



From running shoe to safety shoe, it's just one step!

Already used with success in running shoes, this innovative material improved athletic performances, reducing fatigue.

What if it was the same for the safety shoes users?

For everyone who is exposed to arduous work situations:

- Up and down stairs repeatedly
- Walking long distances
- Standing for long periods
- Trampling

Trust **VIGOREX**^{*} to overcome your limits and improve your performance!

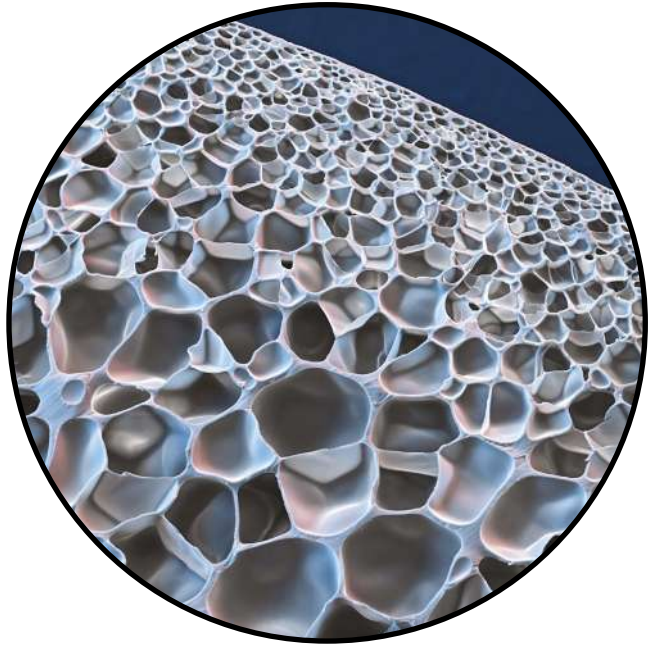
Aimont creates the innovative sole
VIGOREX:

- As a result of a **unique technology**
- Based on **the world of sport**
- Greatly **reduces fatigue**
- Which deal with **work stress**

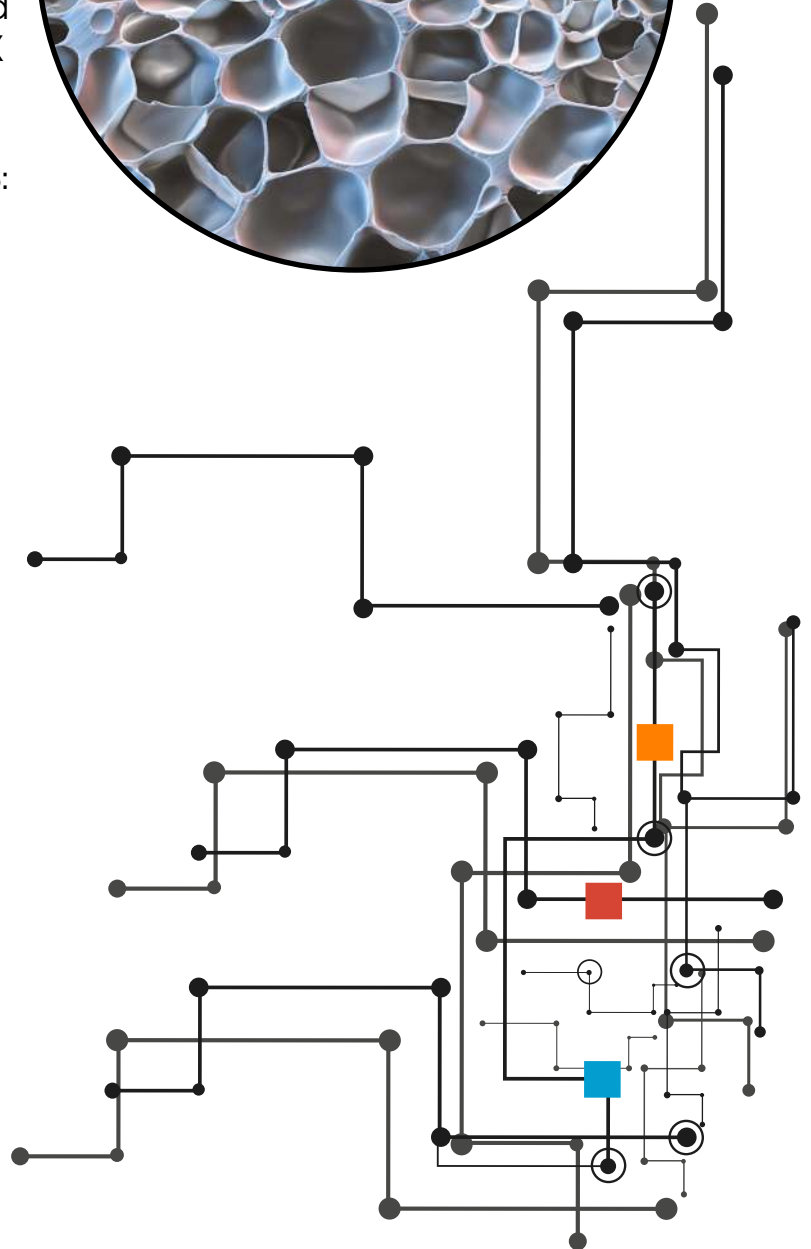
The return of expended energy to the
wearer is the result of the flexibility and
the dynamic elasticity of the VIGOREX
VIGOREX sole.

AND IT WILL BRING YOU WELL DESEVED BENETIFS:

- Decrease of the **effort**
- **MSD risks** reduction
- Improved **blood flow**
- Sensation of **indisputable well-being**



**Shock-absorbing
BUT WITH
return of energy!**



* Patented technology



1. VIGOREX

A technological innovation from the world of running now available for the safety shoe. Trust VIGOREX to overcome your limits and improve your performance!



1. Over 55% energy return for a guaranteed anti-fatigue effect
2. Technology from the world of sport
3. Prevents the risk of MSDs in the legs



BLAZE ESD S3 CI SRC

UPPER	PU TEK® PLUS
TOE-CAP	Alu-Lite 200 J lightweight aluminium
FOOTBED	Soft
MIDSOLE	Flex-System Zero
SOLE	VIGOREX PU/PU with Infinergy® insert from BASF®

SIZE from 38 to 48



CODE :
IAIA120



ULTRA ESD S3 CI SRC

UPPER	PU TEK® PLUS
TOE-CAP	Alu-Lite 200 J lightweight aluminium
FOOTBED	Soft
MIDSOLE	Flex-System Zero
SOLE	VIGOREX PU/PU with Infinergy® insert from BASF®

SIZE from 35 to 48



CODE :
IAIA220



COBALT ESD S3 CI SRC

UPPER	Water-repellent and flexible nubuck leather
TOE-CAP	Alu-Lite 200 J lightweight aluminium
FOOTBED	Soft
MIDSOLE	Flex-System Zero
SOLE	VIGOREX PU/PU with Infinergy® insert from BASF®

SIZE from 35 to 48



CODE :
IAIA101



HYDROGEN ESD S3 CI SRC

UPPER	Water-repellent and flexible nubuck leather
TOE-CAP	Alu-Lite 200 J lightweight aluminium
FOOTBED	Soft
MIDSOLE	Flex-System Zero
SOLE	VIGOREX PU/PU with Infinergy® insert from BASF®

SIZE from 35 to 48



CODE :
IAIA201



DIBOND ESD S3 CI SRC ●

UPPER	Water-repellent and flexible nubuck leather
TOE-CAP	Alu-Lite 200 J lightweight aluminium
FOOTBED	Soft
MIDSOLE	Flex-System Zero
SOLE	VIGOREX PU/PU with Infinergy® insert from BASF®

SIZE from 38 to 48



CODE :
IAIA107

● Discontinued item



TEUTON ESD S3 CI SRC

UPPER	Water-repellent full-grain leather
TOE-CAP	Alu-Lite 200 J lightweight aluminium
FOOTBED	Soft
MIDSOLE	Flex-System Zero
SOLE	VIGOREX PU/PU with Infinergy® insert from BASF®

SIZE from 35 to 48



CODE :
IAIA209



ARGON ESD S1P CI SRC

UPPER	Velour leather and anti-abrasion breathable fabric
TOE-CAP	Alu-Lite 200 J lightweight aluminium
FOOTBED	Soft
MIDSOLE	Flex-System Zero
SOLE	VIGOREX PU/PU with Infinergy® insert from BASF®

SIZE from 38 to 48



CODE :
IAIA202

MERCURY ESD S1P CI SRC ●

UPPER	Velour leather and anti-abrasion breathable fabric
TOE-CAP	Alu-Lite 200 J lightweight aluminium
FOOTBED	Soft
MIDSOLE	Flex-System Zero
SOLE	VIGOREX PU/PU with Infinergy® insert from BASF®

SIZE from 35 to 48



CODE :
IAIA205
● Discontinued item

OXYGEN ESD S1P CI SRC

UPPER	Velour leather and anti-abrasion breathable fabric
TOE-CAP	Alu-Lite 200 J lightweight aluminium
FOOTBED	Soft
MIDSOLE	Flex-System Zero
SOLE	VIGOREX PU/PU with Infinergy® insert from BASF®

SIZE from 35 to 48



CODE :
IAIA203

IRIDIUM ESD S1P CI SRC ●

UPPER	Perforated velour leather
TOE-CAP	Alu-Lite 200 J lightweight aluminium
FOOTBED	Soft
MIDSOLE	Flex-System Zero
SOLE	VIGOREX PU/PU with Infinergy® insert from BASF®

SIZE from 35 to 48



CODE :
IAIA206
● Discontinued item

VULCAN ESD S1P SRC

UPPER	Suede leather and Airnet fabric
TOE-CAP	Alu-Lite 200 J lightweight aluminium
FOOTBED	Soft
MIDSOLE	Flex-System Zero
SOLE	VIGOREX PU/PU with Infinergy® insert from BASF®

SIZE from 35 to 48



CODE :
IAIA218

AMY ESD S1P SRC

UPPER	Denim finish fabric
TOE-CAP	Alu-Lite 200 J lightweight aluminium
FOOTBED	Soft
MIDSOLE	Flex-System Zero
SOLE	VIGOREX PU/PU with Infinergy® insert from BASF®

SIZE from 35 to 42



CODE :
IAIA214

ZINC ESD S3 CI SRC

UPPER	Water-repellent pull-up leather
TOE-CAP	Alu-Lite 200 J lightweight aluminium
FOOTBED	Soft
MIDSOLE	Flex-System Zero
SOLE	VIGOREX PU/PU with Infinergy® insert from BASF®

SIZE from 35 to 48



CODE :
IAIA121



CINDER ESD S3 CI SRC

NEW

UPPER	PU TEK® PLUS
TOE-CAP	Alu-Lite 200 J lightweight aluminium
FOOTBED	Soft
MIDSOLE	Flex-System Zero
SOLE	VIGOREX PU/PU with Infinergy® insert from BASF®

SIZE from 35 to 48



CODE :
IAIA132



GLYCINE S2 FO SR

NEW

UPPER	Water-repellent Wat-Out microfibre
TOE-CAP	Light Plus composite 200 J
FOOTBED	Soft
MIDSOLE	N/A
SOLE	VIGOREX PU/PU with Infinergy® insert from BASF®

SIZE from 35 to 48



CODE :
IAIA111



PU TEK® PLUS TECHNOLOGY uses new threads that are highly resistant to abrasion, directly woven into the fabric, for greater durability and increased performance.

These highly resistant and water-repellent fabrics help create ultra-lightweight and extra-breathable S3 products.

*Tests according to standard EN ISO 20344:2011 show that the breathability is 4 times the minimum required for a safety shoe

JASMINE S2 FO SR

UPPER	Water-repellent Wat-Out microfibre
TOE-CAP	Light Plus composite 200 J
FOOTBED	Soft
MIDSOLE	N/A
SOLE	VIGOREX PU/PU with Infinergy® insert from BASF®

SIZE from 35 to 48



CODE :
IAIA211



KOSMO S2 FO SR

UPPER	Water-repellent Wat-Out microfibre
TOE-CAP	Light Plus composite 200 J
FOOTBED	Soft
MIDSOLE	N/A
SOLE	VIGOREX PU/PU with Infinergy® insert from BASF®

SIZE from 35 to 46



CODE :
IAIA212





2. FLIGHT

The pursuit of lightness in a safety shoe finally has a name: FLIGHT!

Packed with technology for a featherweight, we offer THE solution for anyone who wants a light, stylish trainer for work while ensuring they stay safe.



Comes with laces in 2 colours.

Black laces for a plain look, in colour for a colourful look or mixed for a quirky look!v



NEW PELICAN ESD S3 CI SRC

NEW

UPPER	PU TEK® STAR Light
TOE-CAP	Alu-Lite 200 J lightweight aluminium
FOOTBED	Soft Light
MIDSOLE	Flex-System Zero Light
SOLE	PU/PU Light density from BASF®

SIZE from 35 to 48



CODE :
AVAV101

NEW IBIS ESD S3 CI SRC

NEW

UPPER	PU TEK® STAR Light
TOE-CAP	Alu-Lite 200 J lightweight aluminium
FOOTBED	Soft Light
MIDSOLE	Flex-System Zero Light
SOLE	PU/PU Light density from BASF®

SIZE from 35 to 48



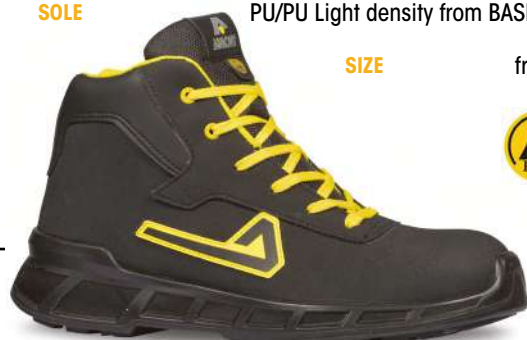
CODE :
AVAV201

NEW ALBATROS ESD S3 CI SRC

NEW

UPPER	Light microfibre, matt finish
TOE-CAP	Alu-Lite 200 J lightweight aluminium
FOOTBED	Soft Light
MIDSOLE	Flex-System Zero Light
SOLE	PU/PU Light density from BASF®

SIZE from 35 to 48



CODE :
AVAV102

NEW EAGLE ESD S3 CI SRC

NEW

UPPER	Light microfibre, matt finish
TOE-CAP	Alu-Lite 200 J lightweight aluminium
FOOTBED	Soft Light
MIDSOLE	Flex-System Zero Light
SOLE	PU/PU Light density from BASF®

SIZE from 35 to 48



CODE :
AVAV202

NEW WADER ESD S1P CI SRC

NEW

UPPER	Breathable, ultra-light fabric
TOE-CAP	Alu-Lite 200 J lightweight aluminium
FOOTBED	Soft Light
MIDSOLE	Flex-System Zero Light
SOLE	PU/PU Light density from BASF®

SIZE from 35 to 48



CODE :
AVAV203

NEW HERON ESD S1P CI SRC

NEW

UPPER	Breathable, ultra-light fabric
TOE-CAP	Alu-Lite 200 J lightweight aluminium
FOOTBED	Soft Light
MIDSOLE	Flex-System Zero Light
SOLE	PU/PU Light density from BASF®

SIZE from 35 to 48



CODE :
AVAV204



3. RETURN

A collection of safety shoes designed with BASF® High Rebound technology which guarantees an energy return of over 40% when the foot is pushing and requires support.



PU TEK® PLUS TECHNOLOGY uses new threads that are highly resistant to abrasion, directly woven into the fabric, for greater durability and increased performance.

These highly resistant and water-repellent fabrics help create ultra-lightweight and extra-breathable S3 products.

*Tests according to standard EN ISO20344:11 show that the breathability is 4 times the minimum required for a safety shoe



ZIRCON ESD S3 CI SRC

UPPER	PU TEK® PLUS
TOE-CAP	Alu-Lite 200 J lightweight aluminium
FOOTBED	Soft
MIDSOLE	Flex-System Zero
SOLE	PU/PU High Rebound in Elastopan® from BASF®

SIZE from 38 to 48



CODE :
ARAR809

AVANGARD ESD S3 CI SRC

UPPER	PU TEK® PLUS
TOE-CAP	Alu-Lite 200 J lightweight aluminium
FOOTBED	Soft
MIDSOLE	Flex-System Zero
SOLE	PU/PU High Rebound in Elastopan® from BASF®

SIZE from 35 to 48



CODE :
ARAR409

RISE ESD S3 CI SRC

UPPER	Water-repellent and flexible nubuck leather
TOE-CAP	Alu-Lite 200 J lightweight aluminium
FOOTBED	Soft
MIDSOLE	Flex-System Zero
SOLE	PU/PU High Rebound in Elastopan® from BASF®

SIZE from 38 to 48



CODE :
ARAR810

DISC ESD S3 CI SRC

UPPER	Water-repellent and flexible nubuck leather
TOE-CAP	Alu-Lite 200 J lightweight aluminium
FOOTBED	Soft
MIDSOLE	Flex-System Zero
SOLE	PU/PU High Rebound in Elastopan® from BASF®

SIZE from 35 to 48



CODE :
ARAR410

GIL ESD S3 CI SRC

UPPER	Water-repellent Wat-Out microfibre
TOE-CAP	Alu-Lite 200 J lightweight aluminium
FOOTBED	Soft
MIDSOLE	Flex-System Zero
SOLE	PU/PU High Rebound in Elastopan® from BASF®

SIZE from 35 to 48



CODE :
ARAR813

RORY ESD S3 CI SRC

UPPER	Water-repellent Wat-Out microfibre
TOE-CAP	Alu-Lite 200 J lightweight aluminium
FOOTBED	Soft
MIDSOLE	Flex-System Zero
SOLE	PU/PU High Rebound in Elastopan® from BASF®

SIZE from 35 to 48



CODE :
ARAR413

COMBAT ESD S3 CI SRC

UPPER	Water-repellent Wat-Out microfibre
TOE-CAP	Alu-Lite 200 J lightweight aluminium
FOOTBED	Soft
MIDSOLE	Flex-System Zero
SOLE	PU/PU High Rebound in Elastopan® from BASF®

SIZE from 35 to 48



CODE :
ARAR412



CLASH ESD S1P CI SRC

UPPER	Soft suede leather and ULTRA-breathable mesh
TOE-CAP	Alu-Lite 200 J lightweight aluminium
FOOTBED	Soft
MIDSOLE	Flex-System Zero
SOLE	PU/PU High Rebound in Elastopan® from BASF®

SIZE from 35 to 48



CODE :
ARAR403

BLOCK ESD S1P CI SRC

UPPER	Soft suede leather and ULTRA-breathable mesh
TOE-CAP	Alu-Lite 200 J lightweight aluminium
FOOTBED	Soft
MIDSOLE	Flex-System Zero
SOLE	PU/PU High Rebound in Elastopan® from BASF®

SIZE from 38 to 48



CODE :
ARAR406

KARINA ESD S1P CI SRC ●

UPPER	Perforated soft suede leather
TOE-CAP	Alu-Lite 200 J lightweight aluminium
FOOTBED	Soft
MIDSOLE	Flex-System Zero
SOLE	PU/PU High Rebound in Elastopan® from BASF®

SIZE from 35 to 42



CODE :
ARAR402

● Discontinued item

LEGACY ESD S1P SRC

UPPER	Perforated soft suede leather
TOE-CAP	Alu-Lite 200 J lightweight aluminium
FOOTBED	Soft
MIDSOLE	Flex-System Zero
SOLE	PU/PU High Rebound in Elastopan® from BASF®

SIZE from 35 to 48



CODE :
ARAR405





4. FACTORY

FACTORY is a collection developed to combat fatigue and physical strain in workers in all industry jobs: automotive, aeronautical, mechanical, logistics, pharmaceutical, chemical and agri-food.



The technology of the Maxi-Soft Duo offset insole helps improve body weight distribution by reducing pressure points. This solution reduces the risk of MSDs for jobs with prolonged standing.



BREAKER ESD S3 CI HI SRC

NEW

UPPER	Water-repellent full-grain leather, grained look
TOE-CAP	Light Plus composite 200 J
FOOTBED	Maxi-Soft Duo
MIDSOLE	Flex-System Zero
SOLE	PU/PU

SIZE from 35 to 48



CODE :
AFAF102

ENGINE ESD S3 CI HI SRC

NEW

UPPER	Water-repellent full-grain leather, grained look
TOE-CAP	Light Plus composite 200 J
FOOTBED	Maxi-Soft Duo
MIDSOLE	Flex-System Zero
SOLE	PU/PU

SIZE from 35 to 48



CODE :
AFAF202

CRUSH ESD S3 CI HI SRC

NEW

UPPER	Water-repellent and flexible nubuck leather
TOE-CAP	Light Plus composite 200 J
FOOTBED	Maxi-Soft Duo
MIDSOLE	Flex-System Zero
SOLE	PU/PU

SIZE from 35 to 48



CODE :
AFAF101

CHECK ESD S3 CI HI SRC

NEW

UPPER	Water-repellent and flexible nubuck leather
TOE-CAP	Light Plus composite 200 J
FOOTBED	Maxi-Soft Duo
MIDSOLE	Flex-System Zero
SOLE	PU/PU

SIZE from 35 to 48



CODE :
AFAF201

PLUG ESD S3 CI HI SRC

NEW

UPPER	PU TEK® STAR
TOE-CAP	Light Plus composite 200 J
FOOTBED	Maxi-Soft Duo
MIDSOLE	Flex-System Zero
SOLE	PU/PU

SIZE from 35 to 48



CODE :
AFAF204

FLOUR ESD S2 SRC

NEW

UPPER	Water-repellent Wat-Out microfibre
TOE-CAP	Light Plus composite 200 J
FOOTBED	Maxi-Soft Duo
MIDSOLE	N/A
SOLE	PU/PU

SIZE from 35 to 48



CODE :
AFAF205

CONNECTOR ESD S1P CI HI SRC

NEW

UPPER	Soft suede leather and ULTRA-breathable mesh
TOE-CAP	Light Plus composite 200 J
FOOTBED	Maxi-Soft Duo
MIDSOLE	Flex-System Zero
SOLE	PU/PU

SIZE from 35 to 48

Maxi
SOFT
Duo

metal
FREE



CODE :
AFAF103

ADAPTOR ESD S1P CI HI SRC

NEW

UPPER	Soft suede leather and ULTRA-breathable mesh
TOE-CAP	Light Plus composite 200 J
FOOTBED	Maxi-Soft Duo
MIDSOLE	Flex-System Zero
SOLE	PU/PU

SIZE from 35 to 48

Maxi
SOFT
Duo

metal
FREE



CODE :
AFAF203







5. DIAMONT

A range of good-looking, effective products adapted to the needs of the modern world.



BOA® Fit System is a quick, easy and precise lace-free fastening system. It prevents the risk of falling and laces coming untied.

ROTOR ESD S3 CI SRC

UPPER	PUTEK® PLUS
TOE-CAP	Light Plus composite 200 J
FOOTBED	Soft + Gel
MIDSOLE	Flex-System Zero
SOLE	DIAMONT PU/PU from BASF®

SIZE from 38 to 47



CODE :
DM20194

AVANGER S3 CI SRC

UPPER	PU TEK® PLUS
TOE-CAP	Light Plus composite 200 J
FOOTBED	VENTO Plus
MIDSOLE	Flex-System Zero
SOLE	DIAMONT PU/PU from BASF®

SIZE from 35 to 47



CODE :
DM10184

HAVOC S3 CI SRC

UPPER	PU TEK® PLUS
TOE-CAP	Light Plus composite 200 J
FOOTBED	VENTO Plus
MIDSOLE	Flex-System Zero
SOLE	DIAMONT PU/PU from BASF®

SIZE from 35 to 47



CODE :
DM20184

LIBERATOR NEW S3 CI SRC

UPPER	Water-repellent full-grain leather
TOE-CAP	Light Plus composite 200 J
FOOTBED	Soft
MIDSOLE	Flex-System Zero
SOLE	DIAMONT PU/PU from BASF®

SIZE from 35 to 47



CODE :
007NT24

SKYMASTER NEW S3 CI SRC

UPPER	Water-repellent full-grain leather
TOE-CAP	Light Plus composite 200 J
FOOTBED	Soft
MIDSOLE	Flex-System Zero
SOLE	DIAMONT PU/PU from BASF®

SIZE from 35 to 47



CODE :
007NT16

THUNDERBOLT S3 CI SRC

UPPER	Water-repellent and flexible nubuck leather
TOE-CAP	Light Plus composite 200 J
FOOTBED	VENTO Plus
MIDSOLE	Flex-System Zero
SOLE	DIAMONT PU/PU from BASF®

SIZE from 38 to 47



CODE :
DM10164

SHRIKE S3 CI SRC

UPPER	Water-repellent and flexible nubuck leather
TOE-CAP	Light Plus composite 200 J
FOOTBED	VENTO Plus
MIDSOLE	Flex-System Zero
SOLE	DIAMONT PU/PU from BASF®

SIZE from 38 to 47



CODE :
DM20164

WILDCAT S3 CI SRC

UPPER	Water-repellent and flexible nubuck leather
TOE-CAP	Light Plus composite 200 J
FOOTBED	VENTO Plus
MIDSOLE	Flex-System Zero
SOLE	DIAMONT PU/PU from BASF®



SIZE

from 38 to 47



CODE :
DM10174

TYPHOON S3 CI SRC ●

UPPER	Water-repellent and flexible nubuck leather
TOE-CAP	Alu-Lite 200 J lightweight aluminium
FOOTBED	Soft + Gel
MIDSOLE	Flex-System Zero
SOLE	DIAMONT PU/PU from BASF®



SIZE

from 35 to 48



CODE :
DM20064

● Discontinued item

AF-TWO NEW S1P CI SRC

UPPER	Velour leather and Air-Texplus inserts
TOE-CAP	Light Plus composite 200 J
FOOTBED	Soft
MIDSOLE	Flex-System Zero
SOLE	DIAMONT PU/PU from BASF®



SIZE

from 35 to 47



CODE :
007NT15

BLACK NEW S1P CI SRC

UPPER	Velour leather and Air-Texplus inserts
TOE-CAP	Light Plus composite 200 J
FOOTBED	Soft
MIDSOLE	Flex-System Zero
SOLE	DIAMONT PU/PU from BASF®



SIZE

from 35 to 47



CODE :
007NT68

CORSAIR S1P SRC

UPPER	Flexible velour with Air-Net inserts
TOE-CAP	Light Plus composite 200 J
FOOTBED	VENTO Plus
MIDSOLE	Flex-System Zero
SOLE	DIAMONT PU/PU from BASF®



SIZE

from 35 to 47



CODE :
DM20116

INVADER S1P SRC

UPPER	Perforated soft suede leather
TOE-CAP	Light Plus composite 200 J
FOOTBED	VENTO Plus
MIDSOLE	Flex-System Zero
SOLE	DIAMONT PU/PU from BASF®



SIZE

from 38 to 47



CODE :
DM20136





6. 24 BIT

A special mix of polyurethane and the cross groove structure of the outsole guarantee excellent grip on all types of surfaces, with outstanding results in slip resistance tests.

SLIP RESISTANCE

98GRIP

SRC (SRA + SRB)

		24 BIT Values	STANDARDS Values
SRA TEST FLOOR Ceramics LUBRICANT Water + Detergent	FLAT	0,98	≥ 0,32
	HEEL 7 degree tilt	0,74	≥ 0,28
SRB TEST FLOOR Steel LUBRICANT Glycerin	FLAT	0,40	≥ 0,18
	HEEL 7 degree tilt	0,35	≥ 0,13

SLIP RESISTANCE REQUIREMENTS ACCORDING TO THE EN ISO 20345:2011 METHOD REQUESTED BY EN 13287:2012



KANYE S3 SRC

UPPER	Water-repellent and flexible pull-up leather
TOE-CAP	Alu-Lite 200 J lightweight aluminium
FOOTBED	Soft
MIDSOLE	Flex-System Zero
SOLE	98 GRIP PU/PU



SIZE

from 35 to 48



CODE :
00ABI04

CALVIN S3 SRC

UPPER	Water-repellent and flexible pull-up leather
TOE-CAP	Alu-Lite 200 J lightweight aluminium
FOOTBED	Soft
MIDSOLE	Flex-System Zero
SOLE	98 GRIP PU/PU



SIZE

from 35 to 48



CODE :
00ABI06

ROKY ESD S3 SRC

UPPER	Water-repellent and flexible pull-up leather
TOE-CAP	Alu-Lite 200 J lightweight aluminium
FOOTBED	Soft
MIDSOLE	Flex-System Zero
SOLE	98 GRIP PU/PU



SIZE

from 35 to 48



CODE :
00ABI26

BIGGIE S3 SRC ●

UPPER	Water-repellent and flexible pull-up leather
TOE-CAP	Alu-Lite 200 J lightweight aluminium
FOOTBED	Soft
MIDSOLE	Flex-System Zero
SOLE	98 GRIP PU/PU



SIZE

from 38 to 47



CODE :
00ABI03

● Discontinued item

ALULITE®



Lightweight, non-magnetic 200j aluminum tip.

As strong as steel, yet 51% lighter.

A sensation of lightness for greater everyday comfort !

TUPAC S1P SRC

UPPER	Flexible velour leather with breathable ULTRA mesh inserts
TOE-CAP	Alu-Lite 200 J lightweight aluminium
FOOTBED	Soft
MIDSOLE	Flex-System Zero
SOLE	98 GRIP PU/PU

SIZE

from 35 to 47



CODE :
00ABI09

ROMELL S1P SRC ●

UPPER	Flexible velour leather with breathable ULTRA mesh inserts
TOE-CAP	Alu-Lite 200 J lightweight aluminium
FOOTBED	Soft
MIDSOLE	Flex-System Zero
SOLE	98 GRIP PU/PU

SIZE

from 35 to 47



CODE :
00ABI05

● Discontinued item

WILLARD S1P SRC ●

UPPER	Flexible velour leather with breathable DURABREATH inserts
TOE-CAP	Alu-Lite 200 J lightweight aluminium
FOOTBED	Soft
MIDSOLE	Flex-System Zero
SOLE	98 GRIP PU/PU

SIZE

from 38 to 47



CODE :
00ABI13

● Discontinued item

DRAKE S1P SRC

UPPER	Flexible velour leather with breathable DURABREATH inserts
TOE-CAP	Alu-Lite 200 J lightweight aluminium
FOOTBED	Soft
MIDSOLE	Flex-System Zero
SOLE	98 GRIP PU/PU

SIZE

from 38 to 47



CODE :
00ABI02

ERIK ESD S1P SRC

UPPER	Flexible velour leather with breathable DURABREATH inserts
TOE-CAP	Alu-Lite 200 J lightweight aluminium
FOOTBED	Soft
MIDSOLE	Flex-System Zero
SOLE	98 GRIP PU/PU

SIZE

from 35 to 48



CODE :
00ABI27

ICE Q S1P SRC

UPPER	Perforated flexible velour
TOE-CAP	Alu-Lite 200 J lightweight aluminium
FOOTBED	Soft
MIDSOLE	Flex-System Zero
SOLE	98 GRIP PU/PU

SIZE

from 35 to 48



CODE :
00ABI10

MILK S2 SRC

UPPER	Water-repellent Wat-Out microfibre
TOE-CAP	Alu-Lite 200 J lightweight aluminium
FOOTBED	Soft
MIDSOLE	N/A
SOLE	98 GRIP PU/PU

SIZE

from 35 to 47



CODE :
00ABI21



CREAM S2 SRC

UPPER	Water-repellent Wat-Out microfibre
TOE-CAP	Alu-Lite 200 J lightweight aluminium
FOOTBED	Soft
MIDSOLE	N/A
SOLE	98 GRIP PU/PU

SIZE

from 35 to 48



CODE :
00ABI24



98GRIP

Thanks to its special mix of polyurethane and its cross groove structure, the 98GRIP sole of the 24BIT collection guarantees RECORD-BREAKING grip on all types of surfaces.

It is the perfect non-slip solution for jobs in logistics, fittings and finishings (plumbers, heating engineers, etc), agri-food, chemicals and pharmaceuticals.



7. TRAIL

The water resistance of its special leather for construction and public works and its specific OUTDOOR spikes make the TRAIL collection particularly suitable for anyone who works outdoors or on building sites.

Special
Construction

The leather has excellent waterproofing, with no water getting through after 7h of tests.



TILL ESD S3 CI SRC

NEW

UPPER	Water-repellent pull-up leather
TOE-CAP	Light Plus composite 200 J
FOOTBED	Soft
MIDSOLE	Flex-System Zero
SOLE	PU/PU Outdoor

SIZE

from 35 to 48



CODE :
007TR16

BRICK ESD S3 CI SRC

NEW

UPPER	Water-repellent pull-up leather
TOE-CAP	Light Plus composite 200 J
FOOTBED	Soft
MIDSOLE	Flex-System Zero
SOLE	PU/PU Outdoor

SIZE

from 35 to 48



CODE :
007TR15

SCOTLAND EVOL ESD S3 CI SRC

NEW

UPPER	Water-repellent pull-up leather
TOE-CAP	Light Plus composite 200 J
FOOTBED	Soft
MIDSOLE	Flex-System Zero
SOLE	PU/PU Outdoor

SIZE

from 38 to 47



CODE :
007TR19



TRAIL "All-terrain" sole

The composition of this OUTDOOR double-density polyurethane is designed to get the perfect balance between comfort, lightness and durability.

The comfort layer, with the right density, guarantees flexibility and excellent cushioning from vibrations and impact on the heel, while the outsole offers very good resistance to abrasion, hydrocarbons, oils and fats.

SAND ESD S3 CI SRC

NEW

UPPER	Water-repellent pull-up leather
TOE-CAP	Light Plus composite 200 J
FOOTBED	Soft
MIDSOLE	Flex-System Zero
SOLE	PU/PU Outdoor

SIZE

from 38 to 47



CODE :
007TR17

GRAVEL ESD S3 CI SRC

NEW

UPPER	Water-repellent pull-up leather
TOE-CAP	Light Plus composite 200 J
FOOTBED	Soft
MIDSOLE	Flex-System Zero
SOLE	PU/PU Outdoor

SIZE

from 38 to 47



CODE :
007TR18

HAMMER ESD S3 CI SRC

NEW

UPPER	Water-repellent full-grain leather
TOE-CAP	Light Plus composite 200 J
FOOTBED	Soft
MIDSOLE	Flex-System Zero
SOLE	PU/PU Outdoor

SIZE from 38 to 47



CODE :
007TR14



DRILL ESD S3 CI SRC

NEW

UPPER	Water-repellent full-grain leather
TOE-CAP	Light Plus composite 200 J
FOOTBED	Soft
MIDSOLE	Flex-System Zero
SOLE	PU/PU Outdoor

SIZE from 35 to 48



CODE :
007TR12



BOLT ESD S3 CI SRC

NEW

UPPER	Water-repellent full-grain leather
TOE-CAP	Light Plus composite 200 J
FOOTBED	Soft
MIDSOLE	Flex-System Zero
SOLE	PU/PU Outdoor

SIZE from 38 to 47



CODE :
007TR13



OCTANE ESD S3 CI SRC

NEW

UPPER	Water-repellent full-grain leather
TOE-CAP	Light Plus composite 200 J
FOOTBED	Soft
MIDSOLE	Flex-System Zero
SOLE	PU/PU Outdoor

SIZE from 35 to 48



SPECIFIC FOR
PETROCHEMICALS



CODE :
007TR11



SPECIFIC FOR
PETROCHEMICALS

The special assembly of its upper prevents fluids from getting inside the shoe (hydrocarbons, chemicals, etc).

This type of safety shoe is particularly suitable for chemical and petrochemical jobs.





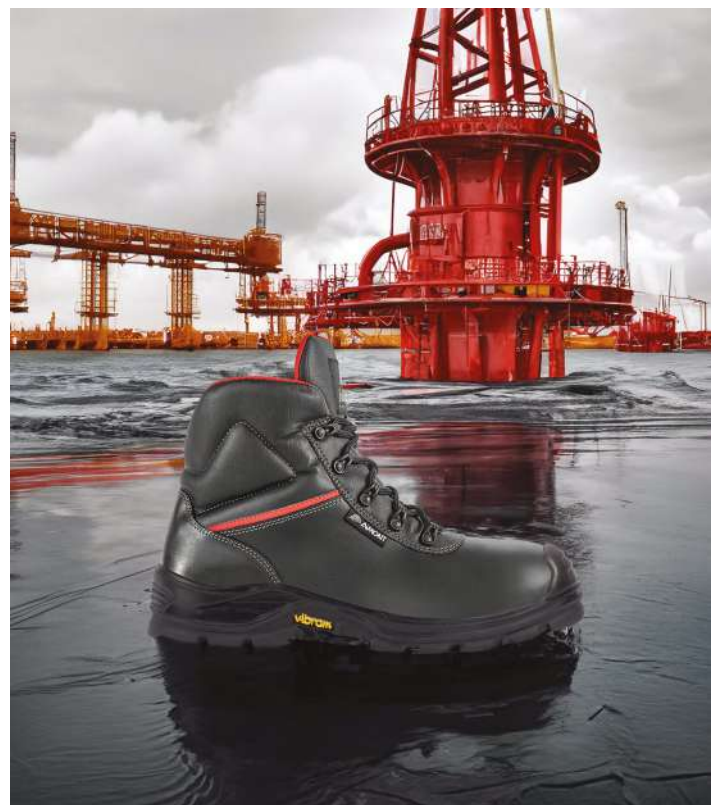
8. SPECIALS

This line is designed with specific protection for all users who work in high-risk situations. It provides a safe, tailored response to extreme and difficult conditions.



1. Designed to be used in a wide range of safety and working environments
2. Offers a high level of grip and durability
3. Excellent resistance to heat and tears

The secret behind the performance of Vibram® lies in the optimum combination of an **incredibly functional DESIGN** for the soles and the use of **exclusive RUBBER COMPOUNDS**.



FORERUNNER S3 CI HI HRO SRC

UPPER	Water-repellent full-grain leather
TOE-CAP	Light Plus composite 200 J
FOOTBED	Soft
MIDSOLE	Flex-System Zero
SOLE	Contact heat resistant up to 300°C

SIZE from 38 to 47

3M
Thinsulate
INSULATION

CODE :
007TR02



CETANE S3 CI HI HRO SRC

UPPER	Water-repellent full-grain leather
TOE-CAP	Light Plus composite 200 J
FOOTBED	Soft
MIDSOLE	Flex-System Zero
SOLE	Contact heat resistant up to 300°C

SIZE from 38 to 47



SPECIFIC FOR
PETROCHEMICALS

CODE :
007TR21



PHEBUS S3 CI HI HRO SRC

UPPER	Water-repellent grained leather
TOE-CAP	Light Plus composite 200 J
FOOTBED	Soft
MIDSOLE	Classic Steel
SOLE	Contact heat resistant up to 300°C

SIZE from 38 to 47

CODE :
0005934



BUTT S3 M CI HI HRO SRC

UPPER	Water-repellent grained leather
TOE-CAP	Light Plus composite 200 J
FOOTBED	Soft
MIDSOLE	Classic Steel
SOLE	Contact heat resistant up to 300°C

SIZE from 38 to 47

CODE :
0005935





9. DOMINUS

A collection with a modern, innovative design, "METAL FREE".

SLIP RESISTANCE

SRC (SRA + SRB)		DOMINUS Values	STANDARDS Values
SRA TEST FLOOR Ceramics LUBRICANT Water + Detergent	FLAT	0,49	≥ 0,32
	HEEL 7 degree tilt	0,35	≥ 0,28
SRB TEST FLOOR Steel LUBRICANT Glycerin	FLAT	0,26	≥ 0,18
	HEEL 7 degree tilt	0,18	≥ 0,13

SLIP RESISTANCE REQUIREMENTS ACCORDING TO THE EN ISO 20345:2011 METHOD REQUESTED BY EN 13287:2012



EGIS S3 CI SRC

UPPER	Water-repellent pull-up leather
TOE-CAP	Light Plus composite 200 J
FOOTBED	Soft
MIDSOLE	Flex-System Zero
SOLE	Dominus PU/PU W-Tech



SIZE

from 36 to 47



CODE :
007AX66

ARTIS S3 CI SRC

UPPER	Water-repellent pull-up leather
TOE-CAP	Light Plus composite 200 J
FOOTBED	Soft
MIDSOLE	Flex-System Zero
SOLE	Dominus PU/PU W-Tech



SIZE

from 36 to 47



CODE :
007AX70

MIRUS S3 SRC

UPPER	Water-repellent grained leather
TOE-CAP	Light Plus composite 200 J
FOOTBED	Soft
MIDSOLE	Flex-System Zero
SOLE	Dominus PU/PU W-Tech



SIZE

from 38 to 47

CODE :
007AX67

SOLVEX S3 SRC

UPPER	Water-repellent Wat-Out microfibre
TOE-CAP	Light Plus composite 200 J
FOOTBED	Soft
MIDSOLE	Flex-System Zero
SOLE	Specials PU/PU W-Tech



SIZE

from 38 to 47



SPECIFIC FOR
PETROCHEMICALS



CODE :
007AX81

FLEX^{system}_{ZERO}

Multi-layer composite insole, flexible, lightweight, non-magnetic, athermic, anti-corrosion and anti-allergic.

It protects 100% of the foot's support surface; tested to the new EN ISO22568-4:2021 standard.



SPECIFIC FOR
PETROCHEMICALS

The special assembly of its upper prevents fluids from getting inside the shoe (hydrocarbons, chemicals, etc).

This type of safety shoe is particularly suitable for chemical and petrochemical jobs.

FORTIS S3 SRC

UPPER	Water-repellent grained leather
TOE-CAP	Light Plus composite 200 J
FOOTBED	Soft
MIDSOLE	Flex-System Zero
SOLE	Dominus PU/PU W-Tech

SIZE from 36 to 47



CODE:
007AX33



ROBORIS S3 SRC

UPPER	Water-repellent grained leather
TOE-CAP	Light Plus composite 200 J
FOOTBED	Soft
MIDSOLE	Flex-System Zero
SOLE	Dominus PU/PU W-Tech

SIZE from 36 to 47



CODE:
007AX13



ARX S1P SRC

UPPER	Flexible velour leather and FRESH fabric
TOE-CAP	Light Plus composite 200 J
FOOTBED	Soft
MIDSOLE	Flex-System Zero
SOLE	Dominus PU/PU W-Tech

SIZE from 36 to 47



CODE:
007AX46



metal
FREE

No metallic materials in the collection's models.

Particularly suitable for environments where metal detectors are present.







10. SUPREME

Double-density polyurethane sole with an outsole designed for maximum stability equally in demanding conditions and outdoors, as well as maximum grip and comfort.

SLIP RESISTANCE

SRC (SRA + SRB)		SUPREME Values	STANDARDS Values
SRA TEST FLOOR Ceramics LUBRICANT Water + Detergent	FLAT	0,42	≥ 0,32
	HEEL 7 degree tilt	0,30	≥ 0,28
SRB TEST FLOOR Steel LUBRICANT Glycerin	FLAT	0,27	≥ 0,18
	HEEL 7 degree tilt	0,20	≥ 0,13

SLIP RESISTANCE REQUIREMENTS ACCORDING TO THE EN ISO 20345:2011 METHOD REQUESTED BY EN 13287:2012



THOR RS S3 SRC

UPPER	Water-repellent grained leather
TOE-CAP	Light Plus composite 200 J
FOOTBED	Soft
MIDSOLE	Flex-System Zero
SOLE	Craft

SIZE from 38 to 47

Quick
release hook



metal
FREE



CODE:
007SP01



FLAG S3 SRC

UPPER	Water-repellent grained leather
TOE-CAP	Light Plus composite 200 J
FOOTBED	Soft
MIDSOLE	Flex-System Zero
SOLE	Craft

SIZE from 38 to 47

metal
FREE



CODE:
007SP02



VIKING RS S3 SRC

UPPER	Water-repellent grained leather
TOE-CAP	Light Plus composite 200 J
FOOTBED	Soft
MIDSOLE	Flex-System Zero
SOLE	Craft

SIZE from 38 to 48

Quick
release hook



metal
FREE



CODE:
007SP08



TRIUMPH S3 SRC

UPPER	Water-repellent grained leather
TOE-CAP	Light Plus composite 200 J
FOOTBED	Soft
MIDSOLE	Flex-System Zero
SOLE	Craft

SIZE from 38 to 48

metal
FREE



CODE:
007SP09



ARCO NEW S1P SRC

UPPER	Perforated flexible velour
TOE-CAP	Light Plus composite 200 J
FOOTBED	VENTO Plus
MIDSOLE	Flex-System Zero
SOLE	Craft

SIZE from 35 to 47



CODE:
0054610

ARCO ESD S1 SRC

UPPER	Perforated flexible velour
TOE-CAP	Light Plus composite 200 J
FOOTBED	VENTO Plus
MIDSOLE	N/A
SOLE	Craft

SIZE from 35 to 47



CODE:
0054619



INOX S3 SRC

UPPER	Water-repellent pull-up leather
TOE-CAP	Light Plus composite 200 J
FOOTBED	Soft
MIDSOLE	Classic Steel
SOLE	Craft



SIZE

from 38 to 48

Spécial
BTP

CODE :
007SP06



LOTAR S3 SRC

UPPER	Water-repellent pull-up leather
TOE-CAP	Light Plus composite 200 J
FOOTBED	Soft
MIDSOLE	Flex-System Zero
SOLE	Craft



SIZE

from 38 to 47

Special
Construction

CODE :
007SP03

URAL S3 SRC ●

UPPER	Water-repellent pull-up leather
TOE-CAP	Light Plus composite 200 J
FOOTBED	Soft
MIDSOLE	Flex-System Zero
SOLE	Craft



SIZE

from 38 to 47

Special
Construction

CODE :
007SP04

● Discontinued item

SHERPA S3 CI SRC

UPPER	Water-repellent pull-up leather
TOE-CAP	Light Plus composite 200 J
FOOTBED	Soft
MIDSOLE	Flex-System Zero
SOLE	Craft



SIZE

from 38 to 47

Special
Construction

metal
FREE

CODE :
007SP10

ODER S3 SRC

UPPER	Water-repellent pull-up leather
TOE-CAP	Light Plus composite 200 J
FOOTBED	Soft
MIDSOLE	Flex-System Zero
SOLE	Craft



SIZE

from 38 to 47

Special
Construction

metal
FREE

CODE :
007SP05





11. GRIPPER WHITE

A collection designed to best meet the hygiene, cleanliness and safety conditions in agri-food and pharmaceutical sectors, GRIPPER WHITE offers excellent non-slip grip with comfort and lightness.

SLIP RESISTANCE

SRC (SRA + SRB)		GRIPPER Values	STANDARDS Values
SRA TEST FLOOR Ceramics LUBRICANT Water + Detergent	FLAT	0,61	≥ 0,32
	HEEL 7 degree tilt	0,43	≥ 0,28
SRB TEST FLOOR Steel LUBRICANT Glycerin	FLAT	0,29	≥ 0,18
	HEEL 7 degree tilt	0,15	≥ 0,13

SLIP RESISTANCE REQUIREMENTS ACCORDING TO THE EN ISO 20345:2011 METHOD REQUESTED BY EN 13287:2012



CALYPSO S2 SRC

UPPER	Water-repellent Wat-Out microfibre
TOE-CAP	Light Plus composite 200 J
FOOTBED	VENTO Plus
MIDSOLE	N/A
SOLE	Gripper White PU/PU

SIZE from 35 to 47



CODE :
007GR00

DAHLIA S2 SRC

UPPER	Water-repellent Wat-Out microfibre
TOE-CAP	Light Plus composite 200 J
FOOTBED	VENTO Plus
MIDSOLE	N/A
SOLE	Gripper White PU/PU

SIZE from 35 to 47



CODE :
007GR03

PEONY S2 SRC

UPPER	Water-repellent Wat-Out microfibre
TOE-CAP	Light Plus composite 200 J
FOOTBED	VENTO Plus
MIDSOLE	N/A
SOLE	Gripper White PU/PU

SIZE from 35 to 47



CODE :
007GR04

ASTER S2 SRC

UPPER	Water-repellent Wat-Out microfibre
TOE-CAP	Light Plus composite 200 J
FOOTBED	VENTO Plus
MIDSOLE	N/A
SOLE	Gripper White PU/PU

SIZE from 35 to 47



CODE :
007GR06

ROSE SB A E SRC

UPPER	Microfibre
TOE-CAP	Classic Steel
FOOTBED	VENTO Plus
MIDSOLE	N/A
SOLE	Gripper White PU/PU

SIZE from 35 to 47



CODE :
0089195

WAT-OUT

Breathable and non-allergenic microfibre, finished with a gel coating enabling a specific stain and wash resistance.



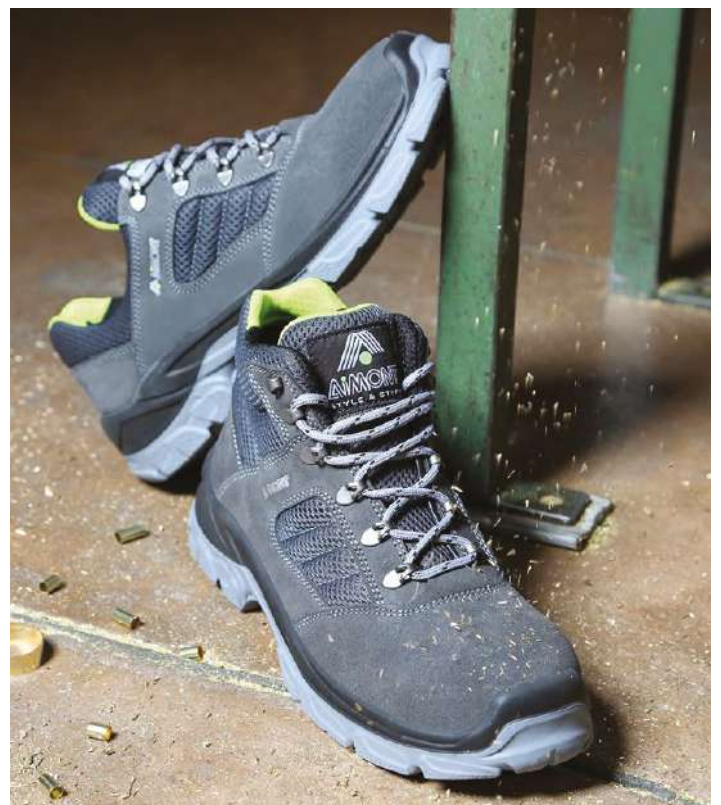
12. DYNAMIC

This collection combines the toughness of steel with the latest criteria in comfort and design. Among its classic and hybrid solutions, you will find a wide range of dynamic products both in their spirit and looks.

SLIP RESISTANCE

SRC (SRA + SRB)		DYNAMIC Values	STANDARDS Values
SRA TEST FLOOR Ceramics LUBRICANT Water + Detergent	FLAT	0,40	≥ 0,32
	HEEL 7 degree tilt	0,36	≥ 0,28
SRB TEST FLOOR Steel LUBRICANT Glycerin	FLAT	0,19	≥ 0,18
	HEEL 7 degree tilt	0,14	≥ 0,13

SLIP RESISTANCE REQUIREMENTS ACCORDING TO THE EN ISO 20345:2011 METHOD REQUESTED BY EN 13287:2012



VIPER RS S3 SRC ●

UPPER	Water-repellent grained leather
TOE-CAP	Classic Steel
FOOTBED	VENTO Plus
MIDSOLE	Classic Steel
SOLE	Classic PU/PU

SIZE

from 38 to 47

Quick
release hook



CODE :

00DYC09

● Discontinued
item



RAVEN S1P SRC

UPPER	Velour leather with Fresh inserts
TOE-CAP	Classic Steel
FOOTBED	VENTO Plus
MIDSOLE	Classic Steel
SOLE	Classic PU/PU

SIZE

from 38 to 47

CODE :

00DYC03



MANTIS S1P SRC ●

UPPER	Velour leather with Fresh inserts
TOE-CAP	Classic Steel
FOOTBED	VENTO Plus
MIDSOLE	Flex-System Zero
SOLE	Classic PU/PU

SIZE

from 36 to 48

CODE :

00DYC18

● Discontinued
item



MOLE ESD S1 SRC

UPPER	Perforated velour leather with Fresh inserts
TOE-CAP	Classic Steel
FOOTBED	VENTO Plus
MIDSOLE	N/A
SOLE	Classic PU/PU

SIZE

from 38 to 47

CODE :

00DYC20



**CLASSIC
STEEL**

Traditional steel tip, 200J protection.

YARD S3 SRC

UPPER	Water-repellent pull-up leather
TOE-CAP	Classic Steel
FOOTBED	VENTO Plus
MIDSOLE	Classic Steel
SOLE	Classic PU/PU



SIZE

from 36 to 48

Special
Construction

CODE :
00DYC26

FIELD S3 SRC

UPPER	Water-repellent pull-up leather
TOE-CAP	Classic Steel
FOOTBED	VENTO Plus
MIDSOLE	Classic Steel
SOLE	Classic PU/PU



SIZE

from 38 to 48

Special
Construction

CODE :
00DYC29

QUANTUM S3 CI SRC

UPPER	Water-repellent pull-up leather
TOE-CAP	Classic Steel
FOOTBED	VENTO Plus
MIDSOLE	Classic Steel
SOLE	Classic PU/PU



SIZE

from 38 to 48

Special
Construction

CODE :
00DYC24

WOOL S3 CI SRC

UPPER	Water-repellent pull-up leather
TOE-CAP	Classic Steel
FOOTBED	VENTO Plus
MIDSOLE	Classic Steel
SOLE	Classic PU/PU



SIZE

from 38 to 48

Special
Construction

CODE :
00DYC25

CLASSIC PLATE

Stainless steel anti-perforation midsole with a penetration force of 1,100 Newton for maximum protection.





13. **ESSENTIAL**

With this collection, Aimont wanted to create a solid, reliable and safe shoe with a classic style and the perfect balance between quality and price.



NAPOLI S3 SRC

UPPER	Water-repellent grained leather
TOE-CAP	Classic Steel
FOOTBED	VENTO Plus
MIDSOLE	Classic Steel
SOLE	Classic PU/PU

SIZE

from 35 to 48



CODE :
EC72503

NOVARA S1P SRC ●

UPPER	Perforated velour leather
TOE-CAP	Classic Steel
FOOTBED	VENTO Plus
MIDSOLE	Classic Steel
SOLE	Classic PU/PU

SIZE

from 35 to 48



CODE :
EC52801
● Discontinued item

DAISY S1 SRC

UPPER	Microfibre
TOE-CAP	Classic Steel
FOOTBED	VENTO Plus
MIDSOLE	N/A
SOLE	Classic PU/PU

SIZE

from 35 to 47



CODE :
0089177

PANSY S2 SRC

UPPER	Water-repellent Wat-Out microfibre
TOE-CAP	Classic Steel
FOOTBED	VENTO Plus
MIDSOLE	N/A
SOLE	Classic PU/PU

SIZE

from 35 to 47



CODE :
0056167

STAY/IN/D/A/R/D/S



Despite a revision of EN ISO 20345 in 2022, EN ISO 20345:2011 is still valid for all new certifications until November 11, 2024.

Therefore, all certificates issued up to this date will be valid for 5 years, i.e. until November 11, 2029.

During this transition period, the two versions of the standards will coexist.

In our next 2024 catalog, we'll be unveiling all aspects of these new standards requirements, the new CE markings and their impact on the technological and safety choices of our collections.

SAFETY CATEGORIES AND SYMBOLS USED (EN ISO 20345:2011)

SB
Safety BASIC

S1/01

Safety BASIC adding:
• closed back (also low shoes)
• antistatic
• heel area energy absorption
• slip resistance EN ISO 20345:2011 according to the EN 13287:2012

S2/02

Safety BASIC + S1 adding:
• water resistant upper material
• slip resistance EN ISO 20345:2011 according to the EN 13287:2012

S3/03

Safety BASIC + S2/02 adding:
• pierce resistant midsole
• sole with dowels or tread
• "slip resistance EN ISO 20345:2011 according to the EN 13287:2012"

4/04

Safety BASIC adding:
• antistatic
• energy absorption capacity at the heel
• walking sole surface resistant to Hydrocarbons
• slip resistance EN ISO 20345:2011 according to the EN 13287:2012

S5

Safety S4 adding:
• pierce resistant midsole
• sole with dowels or tread
• slip resistance EN ISO 20345:2011 according to the EN 13287:2012v méthode EN 13287:2012

CLASS PROTECTION SYMBOL	EN ISO 20345:2011				EN ISO 20347:2012				EN ISO 20345:2011		EN ISO 20347:2012		Requirement of EN ISO 20345:2011 + EN ISO 20347:2012
	SB	S1	S2	S3	OB	O1	O2	O3	S4	S5	O4	O5	
Closed back	●	■	■	■	●	■	■	■	■	■	■	■	
Resistant toe cap with 200J	■	■	■	■	-	-	-	-	■	■	-	-	
A Antistatic footwear	●	■	■	■	●	■	■	■	■	■	■	■	Between 1x10 ⁵ Ω and 1x10 ⁹ Ω
E Heel area energy absorption	●	■	■	■	●	■	■	■	■	■	■	■	Mechanical risk: reduction of heel trauma resulting from impacts or falls of limited height. mechanical energy ≥ 20 joules
FO Walking sole surface resistant to hydrocarbons	●	■	■	■	●	●	●	●	■	■	●	●	Always present by EN ISO 20345:2011 and by EN ISO 20346:2011 but to be specified when required by EN ISO 20347:2012
WRU Water resistant upper material	●	-	■	■	●	●	■	■	-	-	-	-	> 60 mins - Absorbance ≤ 30% H ₂ O after 60 mins ≤ 0,2 gr"
P Pierce resistant midsole	●	●	●	■	●	●	●	■	●	■	●	■	≥ 1100 N.
CI Thermal cold insulation of the sole	●	●	●	●	●	●	●	●	●	●	●	●	By temperature ≤ 10 °C.
HI Thermal heat insulation of the sole	●	●	●	●	●	●	●	●	●	●	●	●	By temperature ≥ 22 °C.
C Conductive footwear	●	●	●	●	●	●	●	●	-	-	-	-	< 1x10 ⁵ OHM
HRO Walking sole surface heat resistance to temperature on contact	●	●	●	●	●	●	●	●	-	-	-	-	Contact at 300°C for 60 secs no melting
AN Ankle protection	●	●	●	●	●	●	●	●	-	-	-	-	Mechanical risk, ankle protection: average value of transmitted force ≥ 10 kN maximum value < 15 kN
WR Water resistant shoes	●	●	●	●	●	●	●	●	-	-	-	-	After 1000 steps or after 80' of automatic dynamic cycling, there should be no more than 3 cm ² of water (stain)
M Shoe with metatarsal protection	●	●	●	●	-	-	-	-	●	●	-	-	Mechanical risk, metatarsal protection: falling objects, foot bumps. Height after impact ≥ 40 mm (size 42)
CR Cut resistant upper	●	●	●	●	●	●	●	●	●	●	●	●	I factor > 2,5
SRC (SRA+SRB) Anti slip requirement	■	■	■	■	■	■	■	■	■	■			
RS Quick release system													

■ Mandatory requirement for the indicated category.

● Discretionary requirement added to the mandatory ones, if reported on markings.

- Non-mandatory requirement.

FO Resistance of the sole to hydrocarbons it is a mandatory requirement for all safety footwear. For the EN ISO 20347:2012 it shall always be indicated on markings.

SLIP RESISTANCE SRC (SRA+SRB)

SRA

Test floor
CERAMICS

Lubricant
WATER + DETERGENT

Flat
≥ 0,32
Heel
≥ 0,28



SRB

Test floor
STEEL

Lubricant
GLYCERIN

Flat
≥ 0,18
Heel
≥ 0,13

SLIP RESISTANCE REQUIREMENTS ACCORDING TO THE EN ISO 20345:2011 METHOD REQUESTED BY EN 13287:2012

The size of the shoe is marked underneath the sole. On the tongue or in the specific label are indicated:

- name of manufacturer
- product code
- month and year of manufacture
- CE compliant markings

This catalogue supersedes all previous.
The data and information given in this price list are subject to change without notice.
The photographic reproduction of colour tones may not be perfectly faithful to reality.

ADAPTOR	ESD S1P SRC	AFAF203	24	HAMMER	ESD S3 CI SRC	007TR14	36
AF-TWO NEW	S1P SRC	007NT15	28	HAVOC	S3 CI SRC	DM20184	27
ALBATROS	ESD S3 SRC	AVAV102	17	HERON	ESD S1P SRC	AVAV204	17
AMY	S1P SRC	IAIA214	14	HYDROGEN	S3 CI SRC	IAIA201	13
ARCO	ESD S1 SRC	0054619	45	IBIS	ESD S3 SRC	AVAV201	17
ARCO NEW	S1P SRC	0054610	45	ICE Q	S1P SRC	00ABI10	32
ARGON	S1P SRC	IAIA202	14	INOX	S3 SRC	007SP06	46
ARTIS	S3 CI SRC	007AX70	41	INVADER	S1P SRC	DM20136	29
ARX	S1P SRC	007AX46	42	IRIDIUM	S1P SRC	IAIA206	14
ASTER	S2 SRC	007GR06	49	JASMINE	S2 FO SR	IAIA211	15
AVANGARD	ESD S3 CI SRC	ARAR409	19	KANYE	S3 SRC	00ABI04	31
AVANGER	S3 CI SRC	DM10184	27	KARINA	ESD S1P SRC	ARAR402	20
BIGGIE	S3 SRC	00ABI03	31	KOSMO	S2 FO SR	IAIA212	15
BLACK NEW	S1P SRC	007NT68	28	LEGACY	ESD S1P CI SRC	ARAR405	20
BLAZE	ESD S3 CI SRC	IAIA120	13	LIBERATOR NEW	S3 SRC	007NT24	27
BLOCK	ESD S1P SRC	ARAR406	20	LOTAR	S3 SRC	007SP03	46
BOLT	ESD S3 CI SRC	007TR13	36	MANTIS	S1P SRC	00DYC18	51
BREAKER	ESD S3 SRC	AFAF102	23	MERCURY	S1P SRC	IAIA205	14
BRICK	ESD S3 CI SRC	007TR15	35	MILK	S2 SRC	00ABI21	33
BUTT	S3 M HRO SRC	0005935	39	MIRUS	S3 SRC	007AX67	41
CALVIN	S3 SRC	00ABI06	31	MOLE	ESD S1 SRC	00DYC20	51
CALYPSO	S2 SRC	007GR00	49	NAPOLI	S3 SRC	0072503	55
CETANE	S3 CI HI HRO SRC	007TR21	39	NOVARA	S1P SRC	0052801	55
CHECK	ESD S3 SRC	AFAF201	23	OCTANE	ESD S3 CI SRC	007TR11	36
CINDER	ESD S3 CI SRC	IAIA132	15	ODER	S3 SRC	007SP05	46
CLASH	ESD S1P SRC	ARAR403	20	OXYGEN	S1P SRC	IAIA203	14
COBALT	S3 CI SRC	IAIA101	13	PANSY	S2 SRC	0056167	55
COMBAT	ESD S3 CI SRC	ARAR412	20	PELICAN	ESD S3 SRC	AVAV101	17
CONNECTOR	ESD S1P SRC	AFAF103	24	PEONY	S2 SRC	007GR04	49
CORSAIR	S1P SRC	DM20116	29	PHEBUS	S3 HRO SRC	0005934	39
CREAM	S2 SRC	00ABI24	33	PLUG	ESD S3 SRC	AFAF204	23
CRUSH	ESD S3 SRC	AFAF101	23	QUANTUM	S3 SRC	00DYC24	52
DAHLIA	S2 SRC	007GR03	49	RAVEN	S1P SRC	00DYC03	51
DAISY	S1 SRC	0089177	55	RISE	ESD S3 CI SRC	ARAR810	19
DIBOND	S3 CI SRC	IAIA107	13	ROBORIS	S3 SRC	007AX13	42
DISC	ESD S3 CI SRC	ARAR410	19	ROKY	ESD S3 SRC	00ABI26	31
DRAKE	S1P SRC	00ABI02	32	ROMELL	S1P SRC	00ABI05	32
DRILL	ESD S3 CI SRC	007TR12	36	RORY	ESD S3 CI SRC	ARAR413	19
EAGLE	ESD S3 SRC	AVAV202	17	ROSE	SB-A-E SRC	0089195	49
EGIS	S3 CI SRC	007AX66	41	ROTOR	ESD S3 CI SRC	DM20194	27
ENGINE	ESD S3 SRC	AFAF202	23	SAND	ESD S3 CI SRC	007TR17	35
ERIK	ESD S1P SRC	00ABI27	32	SCOTLAND EVOL	ESD S3 CI SRC	007TR19	35
FIELD	S3 SRC	00DYC29	52	SHERPA	S3 CI SRC	007SP10	46
FLAG	S3 SRC	007SP02	45	SHRIKE	S3 CI SRC	DM20164	27
FLOUR	ESD S2 SRC	AFAF205	23	SKYMASTER NEW	S3 SRC	007NT16	27
FORERUNNER	S3 CI HI HRO SRC	007TR02	39	SOLVEX	S3 SRC	007AX81	41
FORTIS	S3 SRC	007AX33	42	TEUTON	ESD S3 CI SRC	IAIA209	13
GIL	ESD S3 CI SRC	ARAR813	19	THOR RS	RS S3 SRC	007SP01	45
GLYCINE	S2 FO SR	IAIA111	15	THUNDERBOLT	S3 CI SRC	DM10164	27
GRAVEL	ESD S3 CI SRC	007TR18	35	TILL	ESD S3 CI SRC	007TR16	35

TRIUMPH	S3 SRC	007SP09	45
TUPAC	S1P SRC	00ABI09	32
TYPHOON	S3 CI SRC	DM20064	28
ULTRA	ESD S3 CI SRC	IAIA220	13
URAL	S3 SRC	007SP04	46
VIKING RS	RS S3 SRC	007SP08	45
VIPER RS	RS S3 SRC	00DYC09	51
VULCAN	S1P SRC	IAIA218	14
WADER	ESD S1P SRC	AVAV203	17
WILDCAT	S3 CI SRC	DM10174	28
WILLARD	S1P SRC	00ABI13	32
WOOL	S3 SRC	00DYC25	52
YARD	S3 SRC	00DYC26	52
ZINC	ESD S3 CI SRC	IAIA121	15
ZIRCON	ESD S3 CI SRC	ARAR809	19



INDEX



AIMONT

UNIT 1A, EASTERN PARK | EASTERN AVENUE | LICHFIELD
WS13 7SY | ENGLAND

Phone : +44 (0) 154 3 417 241

info.uk@u-group.it

www.aimont.com